

METALTEK XB1200
ROBOTIC CNC
STEEL COPING
MACHINE



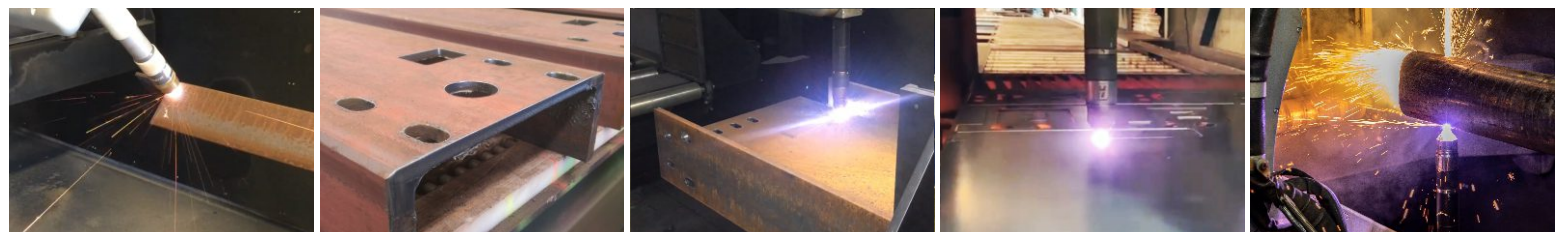
Powered by
Hypertherm
XPR300

METALTEK™

XB1200

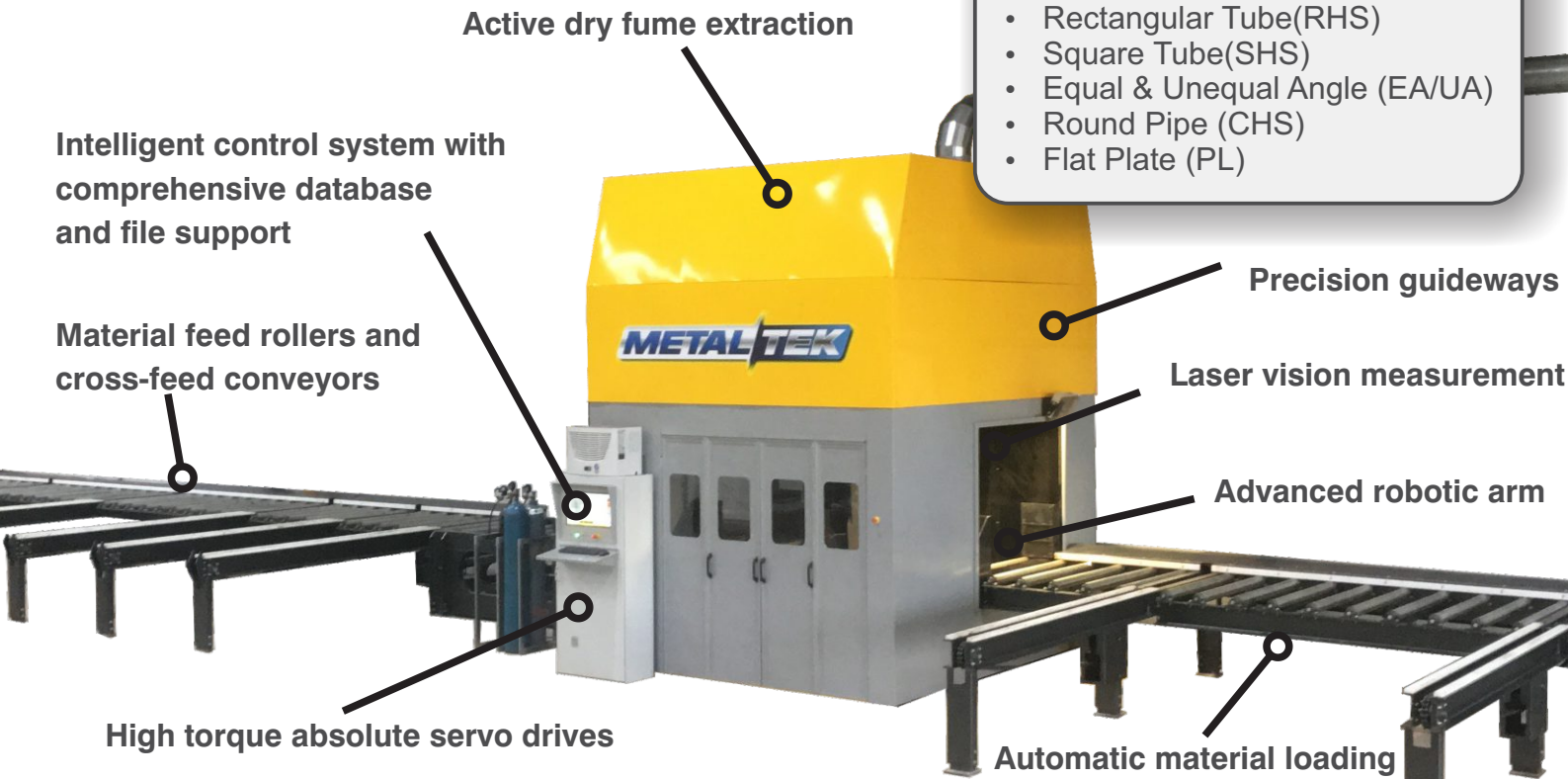
STRUCTURAL STEEL COPING MACHINE.

HIGH-PERFORMANCE STEEL PROCESSING.



PROUDLY DESIGNED AND MANUFACTURED IN AUSTRALIA BY Advanced Robotic Technology
THE TRUSTED NAME IN CNC TECHNOLOGY

LOOK AT THESE FEATURES...



Process these materials:

- Universal Beam (UB)
- Universal Column (UC)
- Parallel Flange Channel (PFC)
- Rectangular Tube(RHS)
- Square Tube(SHS)
- Equal & Unequal Angle (EA/UA)
- Round Pipe (CHS)
- Flat Plate (PL)

Benefits:

- Quality
 - Better quality with the precise high definition cutting and real-time motion controller
 - Bolts fit easily with accurate hole sizing thanks to the True Hole™ technology
- Productivity
 - Start producing faster with a simple to learn but very powerful touchscreen controller.
 - Quickly modify and adjust parameters at machine with the ART ProfileShop v4 Software
 - Faster job alignment and setup with the wireless remote controller
 - Identify parts, remove confusion and save time with the etch marking
 - Full torque at high speed means faster production with the AC brushless servo motors
- Integrated workflow
 - Works seamlessly with existing CAD & MRP systems
 - Real-time reporting on cut times, consumable usage, completed parts
- Safety and environment
 - Meet OH&S requirements and protect workers with automatic fume extraction and filtration systems.
 - Provides a better and safer environment for workers
 - Protects the environment from dust and fumes with the fume extraction and filtration
- Easy to use
 - Easy interfacing to existing computer systems with the wireless networking
 - Get help if you need it - where you need it with the remote access



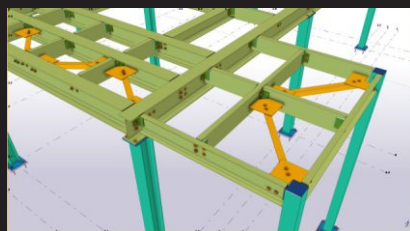
Bring your production into the future

1. Load material on conveyor



Operator places material on the cross-feeds. Material is automatically pulled into machine when required

2. Import and auto nest files



Import files directly from Tekla, Autocad, ProSteel, Solidworks, Advance Steel, etc. Files are optimised into material

3. Press Start to cut all files



Machine automatically loads material
Laser measures and compensates for tolerances
Works through all files with minimal stopping



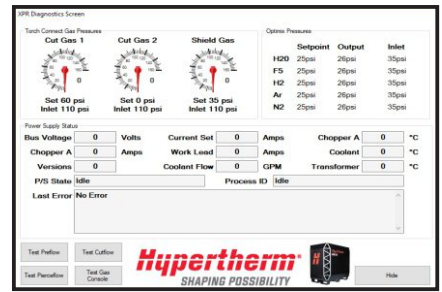
■ **Hypertherm XPR technology**

World leader in plasma cutting technology offering the ultimate in fast, clean cutting. Liquid-cooled torch for longer consumable life. Bevel torch allows 50° angled cuts



■ **ART ProfileShop v4**

The advanced touchscreen controller generates all material quantities, nesting, collision avoidance and automatic cut paths with ease.



■ **Diagnostics screens** give readouts on internal information. Displays gas selections, inlet pressures, flow settings, temperature and coolant flow.



■ **360° processing.** The specialised robotic arm enables the Metaltek XB to cut and mark underneath. This gives the ability to cut rectangular hollow section **on all four sides** with full 45 degree bevels from any direction on any face.



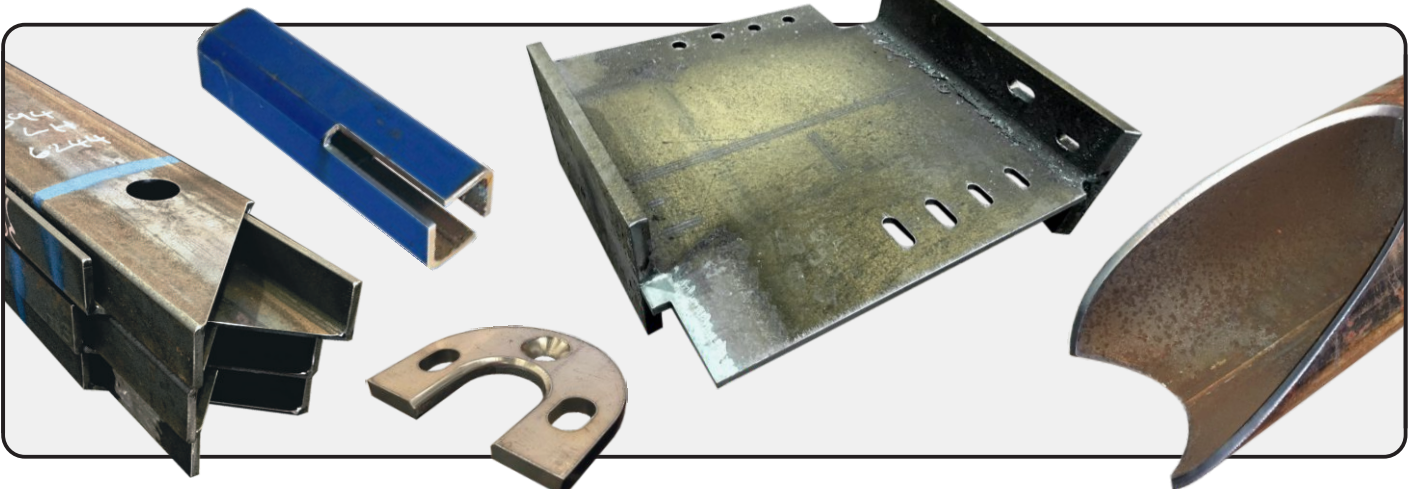
■ **True Hole™ technology** greatly improves hole quality and virtually eliminates taper. The controller automatically identifies suitable holes and adjusts all settings to achieve optimum roundness and cylindricity.



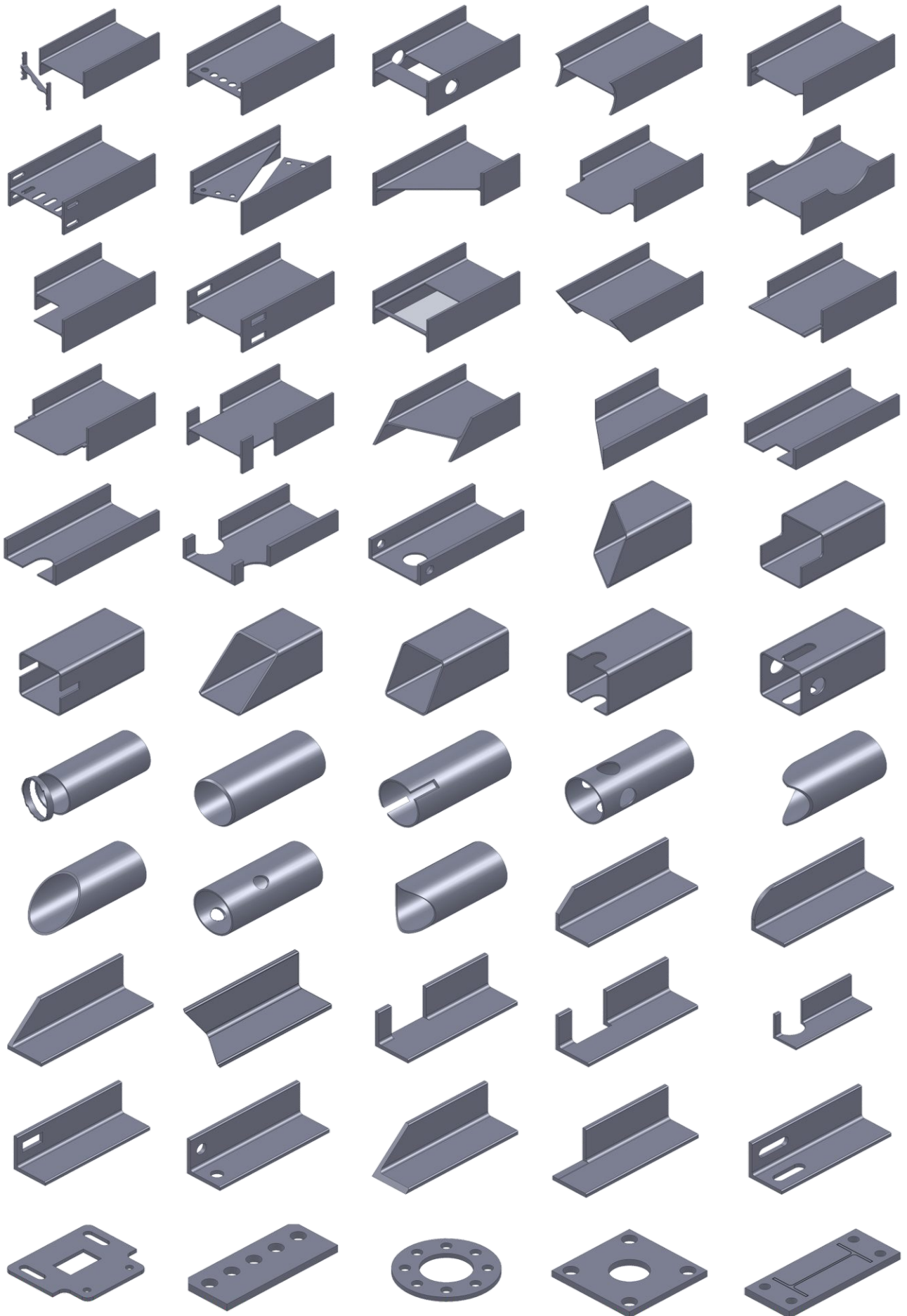
■ **Clear Marking/Etching** allows all assembly instructions, part numbers, weld lines and more to be automatically applied to all four sides. This adds value to the process by reducing measuring and errors during fabrication.



■ **Automated material handling.** The material handling system combines both cross-feed chain conveyors and servo driven position controlled roller conveyors. Material is loaded onto the in-feed system by the operator where it is fully processed and rolled out of the out-feed system automatically. All conveyor functions are controlled by the CNC controller. Manual override is available for operator control of conveyors



Performs all of these cuts and many more...



About ART:

ART has been designing and manufacturing a wide range of world-beating products for the metal processing industry from our factories in Brisbane Australia since 1998. At ART, we create dynamic machines that will surprise you with high productivity and ease of use. This is what we refer to as “State of the ART technology.” Custom designed robotic arms, servo controlled hitch feed positioning systems and advanced 3D multi-axis controls are just a few of the developments that increase productivity, performance and capabilities of this machine. ART's ProfileShop V4 touchscreen user interface combines ease of use with advanced features to automate all cutting settings, resulting in optimum cut quality. At ART, we are driven to do better every day.

Training:

■ **On-site training** is provided as a standard feature. Step by step instruction is given on drawing parts, tool path and nesting, and machine operation. Optional extended training is also available on request for existing or new operators. This ensures that you always have qualified operators on hand.

□ **ART Factory based training** is also available in a classroom style setting at the ART factory. This is often a favourable option because students are not interrupted during training. This results in a better learning experience and can be done prior to machine delivery. As this can be a more cost effective option, it is also good for updating existing operator skills or training new staff.



PROUDLY DESIGNED AND MANUFACTURED IN AUSTRALIA BY

Advanced Robotic Technology

THE TRUSTED NAME IN CNC TECHNOLOGY

57 Trade Street Lytton Queensland Australia 4178

Ph. +61 7 3393 6555 Fax. +61 7 3393 5355

Email sales@advancedrobotic.com

www.advancedrobotic.com

